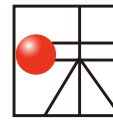


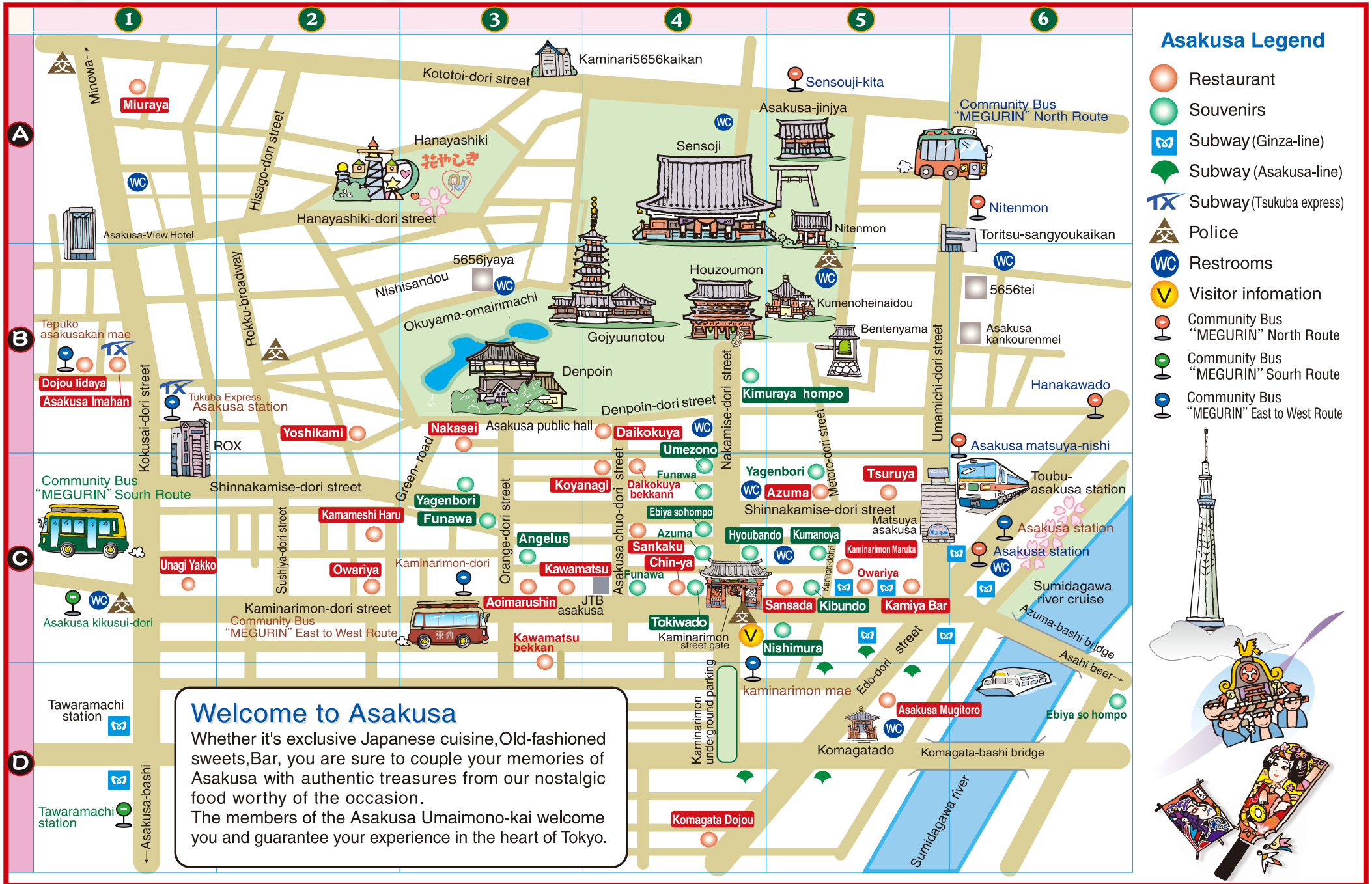
Asakusa Uaimono-kai English Guide Map

浅草うまいもの会



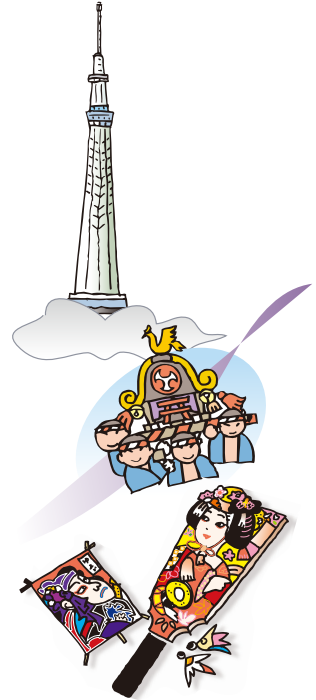
since 1959

www.asakusa-umai.ne.jp



- ### Asakusa Legend
- Restaurant
 - Souvenirs
 - Subway (Ginza-line)
 - Subway (Asakusa-line)
 - Subway (Tsukuba express)
 - Police
 - Restrooms
 - Visitor information
 - Community Bus "MEGURIN" North Route
 - Community Bus "MEGURIN" South Route
 -  Community Bus "MEGURIN" East to West Route

Welcome to Asakusa
 Whether it's exclusive Japanese cuisine, Old-fashioned sweets, Bar, you are sure to couple your memories of Asakusa with authentic treasures from our nostalgic food worthy of the occasion.
 The members of the Asakusa Uaimono-kai welcome you and guarantee your experience in the heart of Tokyo.





浅草うまいもの会

Asakusa Umaimono-kai Guide of members

TEL 03-3844-1221
info@asakusa-umai.ne.jp

Souvenirs

- Nishimura** Japanese Confectionery 3841-0665 C-5
9:00am~7:00pm
- Kibundo** Kawara-senbei 3841-4401 C-5
(tile-shaped rice crackers)
9:00am~7:00pm
- Tokiwado** Kaminari-okoshi 3841-5656 C-4
(millet-and-rice cake sweets)
9:00am~9:00pm
- Hyoubando** Arare, Senbei 3841-8557 C-4
(Rice cracker, Japanese traditional confectionery)
9:30am~6:30pm
- Ebiya so hompo** Edo-mae Tsukudani 3841-2710 C-4
(seafood/seaweed boiled in soy sauce) D-6
9:00am~6:00pm
- Kimuraya** Ningyo-yaki 3844-9754 B-4
Ningyouyaki hompo (baked doll-shaped sweet with bean filling)
9:30am~6:30pm
- Umezono** Oshiruko 3841-7580 C-4
(sweet bean soup with rice cake)
10:00am~8:00pm (L.O 8:00pm)
- Angelus** Coffee & Cakes 3841-9761 C-3
11:00am~9:00pm (L.O 8:40pm)
- Funawa** Imo-yokan 3842-2781 C-3
(sweet potato sweets) C-4
weekday 10:00am~7:00pm · Saturday 9:30am~8:00pm · holiday 9:30am~7:30pm
- Yagenbori** Nana-iro togarashi 3626-7716 C-3
(seven-pepper seasoning)
10:00am~7:00pm
- Kumanoya** Japanese gourmet delicacies 3841-8089 C-5
10:00am~5:00pm

Restaurants / Bars

- Komagata Dojou** Dojo 3842-4001 D-4
(loach)
11:00am~9:00pm (L.O 9:00pm)
- Asakusa Mugitoro** Tororo ryouri 3842-1066 D-5
(yam dishes)
weekday 11:30 · holiday 11:00am~10:30pm (L.O 9:00pm)
- Kamiya Bar** Denki buran 3841-5400 C-5
(brandy and other alcoholic beverages)
11:30am~10:00pm (L.O 9:30pm)
- Owariya** Soba, Tendon 3841-8780 C-2
(Japanese noodles) C-5
11:30am~8:30pm (L.O 8:30pm)
- Chin-ya** Sukiyaki 3841-0010 C-4
weekday 12:00 · holiday 11:30am~9:00pm (L.O 7:00pm)
- Aoimarushin** Tempura 3841-0110 C-3
11:00am~9:00pm (L.O 8:00pm)
- Miuraya** Fugu 3841-3151 A-1
(blowfish)
12:00am~10:00pm (L.O 9:30pm)
- Kawamatsu** Unagi 3841-1234 C-3
(eels) D-3
11:30am~9:00pm (holiday 8:00pm)
- Sansada** Tempura 3841-3400 C-5
11:30am~9:30pm (L.O 9:30pm)
- Tsuruya** Unagi, Tempura 3841-0280 C-5
(eels)
weekday 11:20
holiday 11:00am~9:00pm (L.O 8:50pm)
- Azuma** Downtown-style cuisine 3841-0190 C-5
11:00am~9:00pm (L.O 8:30pm) C-4
- Daikokuya Tempura** Tempura, Tendon 3844-1111 B-4
(eels) C-4
11:00am~9:00pm (L.O 8:30pm holiday 9:00pm)
- Koyanagi** Unagi 3843-2861 C-4
(eels)
11:30am~9:00pm (L.O 8:30pm)
- Kamameshi Haru** Kamameshi 3842-1511 C-2
(boiled rice with various flavored ingredients)
11:00am~9:30pm (L.O 9:00pm)
- Yoshikami** Western-style cuisine 3841-1802 B-2
11:45am~10:30pm (L.O 10:00pm)
- Asakusa Imahan** Sukiyaki 3841-1114 B-1
11:30am~9:30pm (L.O 8:30pm)
- Dojou Iidaya** Dojo 3843-0881 B-1
(loach)
11:30am~9:30pm (L.O 9:00pm)
- Sankaku** Fugu 3841-7650 C-4
(blowfish)
~9:00pm
- Nakasei** Tempura 3841-4015 B-3
weekday 11:30am~2:00pm, 5:00pm~10:00pm (L.O 8:00pm)
Holiday 11:30am~8:00pm
- Kaminarimon Maruka** Soba 3842-2020 C-5
11:00am~8:30pm (L.O 8:00pm)
- Unagi Yakko** Unagi 3841-9886 C-1
11:30am~8:45pm